

Welton Road, Brough, East Yorkshire, HU15 1AF

☎ 01482 669982

✉ info@limbestateagents.co.uk

🌐 limbestateagents.co.uk

Limb
MOVING HOME



28 Blackburn Avenue, Brough, East Yorkshire, HU15 1BD

- 📍 End Terrace House
- 📍 Ready to Move Straight In
- 📍 Great Corner Plot
- 📍 Council Tax Band = B
- 📍 2 Bedrooms
- 📍 Side Drive + Garage
- 📍 Sunny Facing Garden
- 📍 Freehold / EPC =

£165,000

INTRODUCTION

Ready to move straight into is this freshly decorated and carpeted two bedroomed end mews house which stands in a great corner plot with drive and garage, side garden and a sunny walled rear garden. This appealing property is waiting for its next loving owner and briefly comprises an entrance hallway, kitchen, living room overlooking the garden and with door out, two bedrooms and shower room. Gas fired central heating to radiators and uPVC framed double glazing (except one window) is installed.

LOCATION

The property is situated within the popular cul-de-sac of Blackburn Avenue, off Skillings Lane. Brough is a highly sought-after location in the East Riding of Yorkshire, offering an exceptional blend of modern amenities, a strong community feel, and unparalleled connectivity. Positioned perfectly on the A63, Brough has evolved into a premier residential village providing a welcoming and thriving environment ideal for families and professionals alike. Excellent facilities cater to all ages.

Education is served by Hunsley Primary School and Brough Primary School for younger students. For secondary education, the area is served by the well-regarded South Hunsley School and Sixth Form College in the adjacent village of Melton. Public schooling is also available locally with a combination of Hymers College in Hull, Hull Tranby in Anlaby and Pocklington School within striking distance.

The village centre and nearby retail parks offer comprehensive shopping facilities, including a number of Supermarkets, a variety of local shops, and popular dining and drinking options. Recreational needs are well catered for with Brantingham Park, Blackburn Leisure Sports & Community Club, nearby Welton Waters plus the challenging Brough Golf Course.

Brough provides superb regional connectivity, arguably the best in the area for commuters. Immediate access to the A63 and the wider M62 motorway corridor is available. Furthermore, Brough railway station is a major draw, providing regular services to Hull, Leeds, and York, alongside direct high-speed links to London King's Cross.

Accessibility to key destinations includes:

- Hull City Centre: Approx. 10 miles
- Beverley (Historic Market Town): Approx. 12 miles
- York: Approx. 35 miles
- Leeds: Approx. 60 miles

Beyond the immediate vicinity, the location offers unparalleled access to the beauty of the East Riding countryside. The nearby Yorkshire Wolds present a stunning landscape of peaceful walking trails and traditional villages. This area is perfect for outdoor enthusiasts, offering easy exploration of the coast, including the dramatic clifftops and sandy beaches. The thriving market town of Beverley is nearby with the attraction of York still convenient yet a little more distant.

ACCOMMODATION

Residential entrance door leads to:

ENTRANCE HALL

With cupboard to corner house Worcester gas fired central heating boiler.

KITCHEN

Having a range of fitted base and wall mounted units with roll top worksurfaces, integrated oven, four ring gas hob, filter hood, sink and drainer.



LIVING ROOM

Situated to the rear of the house with a window and door to the rear garden. A staircase leads up to the first floor.



FIRST FLOOR

LANDING

BEDROOM 1

With range of fitted wardrobes and drawers, window to rear elevation.



BEDROOM 2

Fitted wardrobes and shelves, window to side elevation.



SHOWER ROOM

With suite comprising large shower cubicle, low level W.C. and wash hand basin, tiled surround. Cupboard to corner.



OUTSIDE

The property occupies a good sized corner plot with a side drive providing parking and access to the attached garage with further lawned garden to side, upon which further parking could be created. The rear garden enjoys a south westerly aspect and is part walled, creating privacy and a create area to relax or entertain in.



HEATING

The property has the benefit of gas central heating to radiators.

GLAZING

The property has replacement uPVC framed double glazing (except one window) installed.

TENURE

Freehold

COUNCIL TAX BAND

From a verbal enquiry we are led to believe that the Council Tax band for this property is Band B. We would recommend a purchaser make their own enquiries to verify this.

FIXTURES & FITTINGS

Please note those items specifically mentioned in these particulars are to be deemed as being included in the purchase price unless otherwise agreed in writing. Certain other items may be available by separate negotiation as to price. Those items visible in the photographs such as furniture and personal belongings are not included in the sale price.

VIEWING

Strictly by appointment through the agent. Brough Office 01482 669982. A prospective viewer should check on the availability of this property prior to viewing.

AGENTS NOTE

For clarification, we wish to inform prospective purchasers that we have not carried out a detailed survey, nor tested the services, appliances, plumbing or heating system and specific fittings for this property. All measurements provided are approximate and for guidance purposes only. Floor plans are included as a service to our customers and are intended as a GUIDE TO LAYOUT only, NOT TO SCALE. Limb Estate Agents Ltd for themselves and for the vendors or lessors of this property whose agents they are give notice that (i) the particulars are set out as a general outline only for the guidance of intending purchasers or lessees, and do not constitute any part of an offer or contract (ii) all descriptions, dimensions, references to condition and necessary permissions for use and occupation, and other details are given in good faith and are believed to be correct and any intending purchaser or tenant should not rely on them as statements or representations of fact but must satisfy themselves by inspection or otherwise as to the correctness of each of them (iii) no person in the employment of Limb Estate Agents Ltd has any authority to make or give any representation or warranty whatever in relation to this property. If there is any point which is of particular importance to you, please contact the office and we will be pleased to check the information, particularly if you contemplate travelling some distance to view the property. These particulars are issued on the strict understanding that all negotiations are conducted through Limb Estate Agents Ltd.

PHOTOGRAPH DISCLAIMER

In order to capture the features of a particular room we will mostly use wide angle lens photography. This will sometimes distort the image slightly and also has the potential to make a room look larger. Please therefore refer also to the room measurements detailed within this brochure. AI may have also been used to enhance photography.

PROPERTY TO SELL?

If you have a property to sell we would be delighted to provide a free/no obligation valuation and marketing advice. Call us now on 01482 669982.





Floor 0



Approximate total area^m
278 ft²
25.8 m²

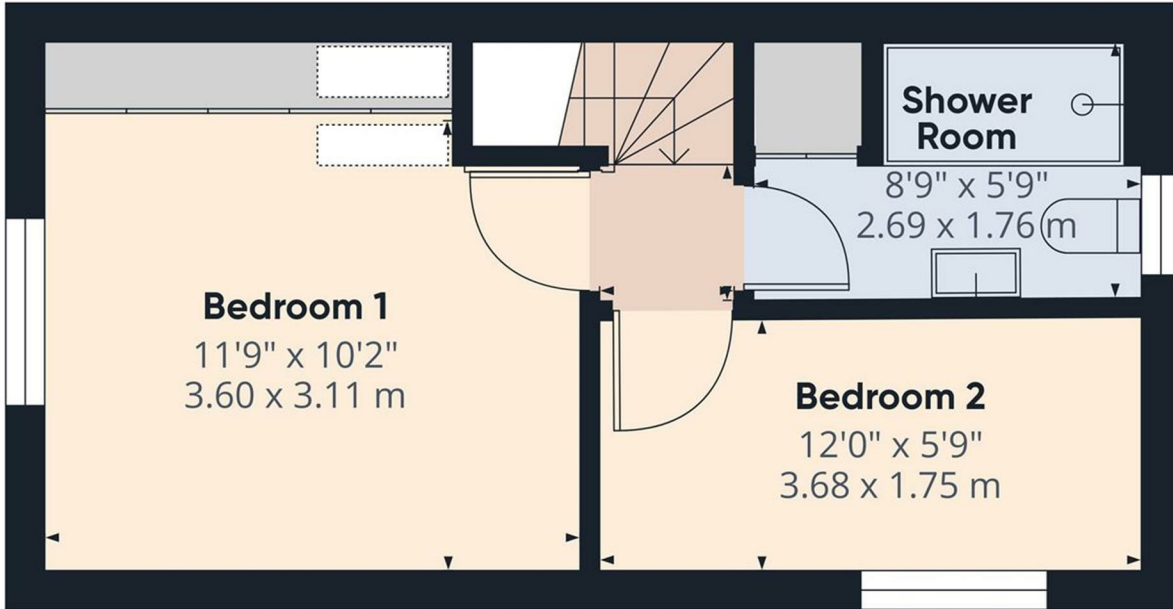
Reduced headroom
15 ft²
1.4 m²

(1) Excluding balconies and terraces

Reduced headroom
----- Below 5 ft/1.5 m

Calculations reference the RICS IPMS 3C standard. Measurements are approximate and not to scale. This floor plan is intended for illustration only.

GIRAFFE360



Floor 1


Approximate total area^m
 251 ft²
 23.3 m²


(1) Excluding balconies and terraces

Calculations reference the RICS IPMS 3C standard. Measurements are approximate and not to scale. This floor plan is intended for illustration only.

GIRAFFE360



| Energy Efficiency Rating | | |
|--|----------------------------|---|
| | Current | Potential |
| <i>Very energy efficient - lower running costs</i> | | |
| (92 plus) A | | |
| (81-91) B | | |
| (69-80) C | | |
| (55-68) D | | |
| (39-54) E | | |
| (21-38) F | | |
| (1-20) G | | |
| <i>Not energy efficient - higher running costs</i> | | |
| England & Wales | EU Directive 2002/91/EC |  |

| Environmental Impact (CO ₂) Rating | | |
|---|----------------------------|---|
| | Current | Potential |
| <i>Very environmentally friendly - lower CO₂ emissions</i> | | |
| (92 plus) A | | |
| (81-91) B | | |
| (69-80) C | | |
| (55-68) D | | |
| (39-54) E | | |
| (21-38) F | | |
| (1-20) G | | |
| <i>Not environmentally friendly - higher CO₂ emissions</i> | | |
| England & Wales | EU Directive 2002/91/EC |  |